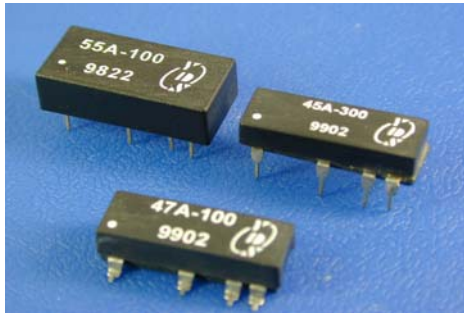




### 14 PIN LEADING & TRAILING TTL ACTIVE DELAY LINE



### FEATURES

- 14-PIN PACKAGE.
- 5 EQUALLY-SPACED TAPS.
- TTL SCHOTTKY INTERFACED.
- TOTAL DELAYS FROM 25-1000nS.
- TPLH AND TPHL CONTROLLED.

### ELECTRICAL CHARACTERISTICS

I <sub>IH</sub> Logic"1" Input Current	:50uA max
I <sub>IL</sub> Logic"0" Input Current	:-2mA max
V <sub>OH</sub> Logic"1" Output Voltage	:2.7V min
V <sub>OL</sub> Logic"0" Output Voltage	:0.5V max
V <sub>IH</sub> Logic"1" Input Voltage	:2.0V min
V <sub>IL</sub> Logic"0" Input Voltage	:0.8V max
T <sub>A</sub> Operating Temperature	:0°C to 70°C
N <sub>H</sub> Fanout"1" Output	:20 TTL Load
N <sub>L</sub> Fanout"0" Output	:10 TTL Load
Supply Current	:75mA Typ.

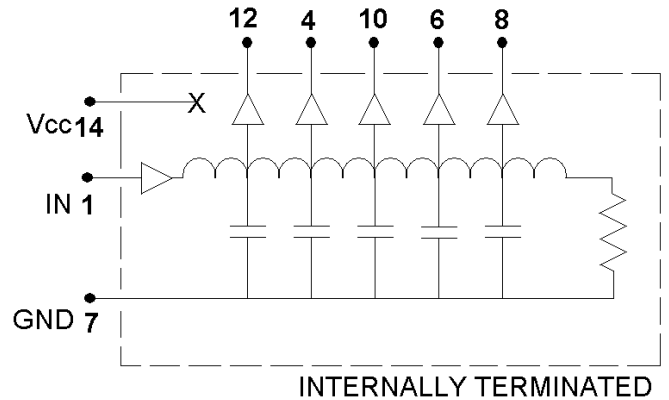
### INPUT PULSE TEST CONDITION

Pulse Voltage	:3.2V
Pulse Width	:50nS min. or 100%T <sub>d</sub>
Duty Cycle	:<50%
Pulse Rise Time	:2nS(0.75 to 2.4V)
Time Delay Measured	:@1.5V level
Supply Voltage V <sub>cc</sub>	:5.0±0.25Vdc

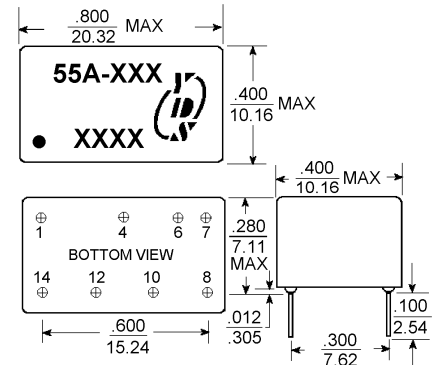
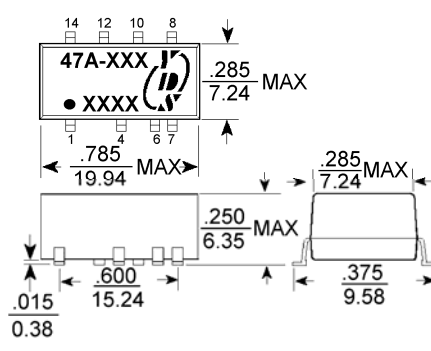
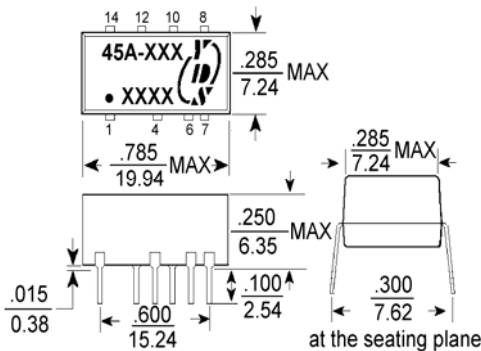
### ELECTRICAL SPECIFICATIONS

PART NO.	DELAY TIME T <sub>d</sub> (nS)	TAP DELAY (nS)	RISE TIME Tr(nS)max
45A/47A/55A-025	25±2	5±2	4
45A/47A/55A-050	50±5%	10±2	4
45A/47A/55A-075	75±5%	15±2	4
45A/47A/55A-100	100±5%	20±2	4
45A/47A/55A-150	150±5%	30±2	4
45A/47A/55A-200	200±5%	40±2	4
45A/47A/55A-250	250±5%	50±5%	4
45A/47A/55A-300	300±5%	60±5%	4
45A/47A/55A-500	500±5%	100±5%	4
45A/47A/55A-1000	1000±5%	200±5%	4

### PIN CONNECTIONS



### MARKINGS AND DIMENSIONS



Dimensions: inches/mm

Unless otherwise specified, all tolerances are ±.010/±0.25